

A Mathematical Model of CPH Theory

By;

Hossein Javadi

javadi_hossein@hotmail.com
amir_javadi4@yahoo.com

http://groups.yahoo.com/group/cph_theory
http://groups.yahoo.com/group/Farsi_cph

Relative Article

English

http://groups.yahoo.com/group/cph_theory/files/Unified-CPH-Theory-new.pdf

Persian

http://groups.yahoo.com/group/Farsi_cph/files/Unified-CPH-Theory-new.pdf

Properties of CPH

CREATION PARTICLE HIGGS

$$\text{CPH} \quad m \xrightarrow{V_c} \quad \mathbf{I} \quad \text{momentum of Inertia} \quad \text{CPH} \quad \text{Graviton}$$

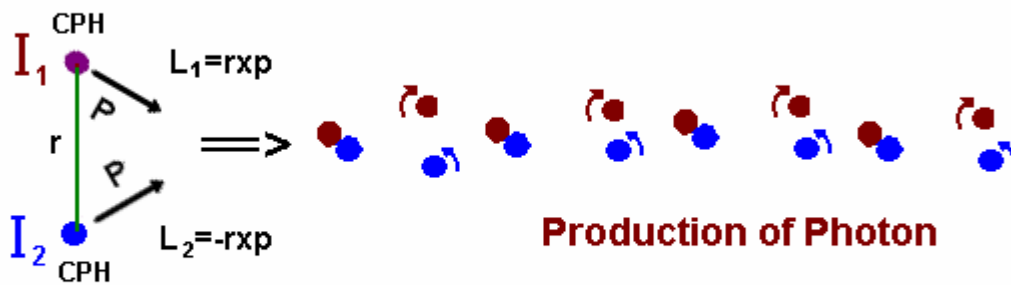
$$P = mV_c \quad V_c > c$$

A Supposition path of CPH



$\text{grad } V_c = 0$, in all inertial frame and any space

Production of Photon and BEGINNING TIME

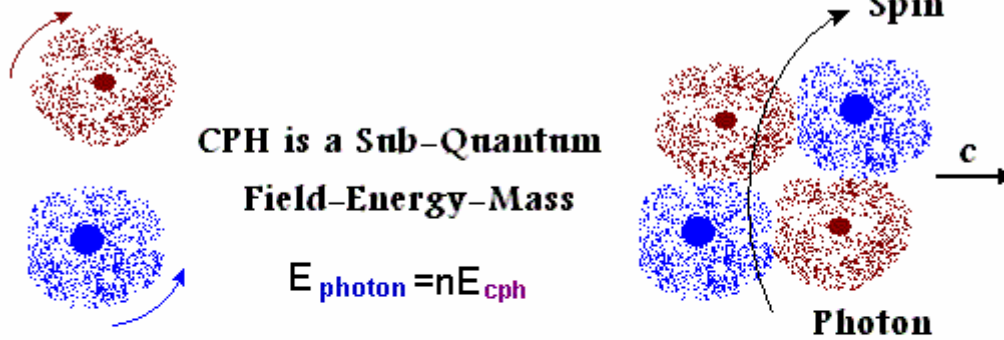


Production of Photon

$$|L_1| = |L_2| \quad L, \text{ Angular Momentum}$$

CPH Takes Spin because ; $\text{grad } V_c = 0$, in all inertial frame and any space

Everything formed of Sub-Quantum Field, Energy and Mass calls CPH



When Spin=0 ; $\begin{matrix} m \\ \bullet \end{matrix} \xrightarrow{V_c} \quad P = mV_c \quad E_{cph} = \frac{P^2}{m} = mV_c^2$

$\begin{matrix} \curvearrowright \\ \bullet \\ \omega \end{matrix} \xrightarrow{v} ; p = mv, L = I\omega, E_v = mv^2, E_{spin} = I\omega^2$

$E_{cph} = mv^2 + I\omega^2 ; v=c \implies E_{cph} = mc^2 + I\omega^2$

The Effect of Gravitation on EMW is a Probably Function
Gravitaion Effect on Electromagnrtic Waves

$P(\text{GEMW}) = P(\text{Gravity effect on EMW}) = \frac{\text{Energy of Photon}}{\text{Energy of Gamma Photon}}$

A Photon in a Gravitational Field

$\Delta E = P(\text{GEMW}) \int_{m_0}^m \int_{g_0}^g \int_0^h dm dg dh$ m is mass of phtoton
g is gravity intensity
h is high

for radio wave, P(GEMW) is around 10^{-15}

for white light, P(GEMW) is around 10^{-6}

for CPH, P(GEMW) is very less than 10^{-20}

for Blue-Shift ΔE is positive

for Red-Shift ΔE is negative

Newton's Second Law

When Force F applied on an object with mass M_1 and velocity V_1 , N CPHs enter to object. A CPH has mass m and limit speed of v in experintal frame. Then F loses N CPH.

$$\bar{F} = \frac{\Delta P}{\Delta t}, \quad \Delta P = M_2 V_2 - M_1 V_1 = N m v, \quad F \text{ loses } N \text{ CPHs}, \quad M_2 = M_1 + N m$$

Work

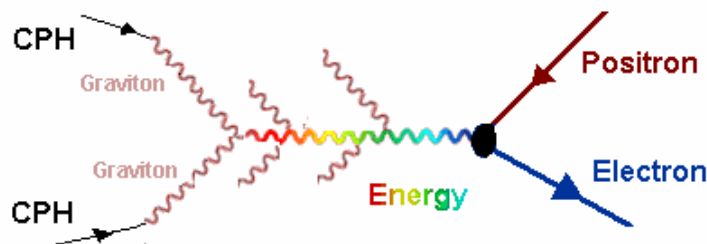
$$W = \int_0^r F \cdot dr = \text{Energies of } N \text{ CPHs}$$

$W=0$, number of CPH enters to object is equal that the number of CPHs leave it. Like object is on the sureface of the earth.

$W>0$, CPH enter to object. $W<0$, CPH leave object

Spin and Phenomenon

Energy doing form of CPH. Energy prodecses Matter and Anti-Matter.



Everything had formed of CPH. CPH has Spin in evrything's sryctyre.

And a CPH moves with speed of V_c , $\text{grad}V_c=0$ in all inertial frame, any spsce

$$\frac{\partial V_c}{\partial x} \frac{dx}{dt} + \frac{\partial V_c}{\partial y} \frac{dy}{dt} + \frac{\partial V_c}{\partial z} \frac{dz}{dt} = 0 \quad \text{When CPHs do contact, object explodes.}$$

In a body, Spin of CPH is a function of body's mass.

$$\frac{\partial V_c}{\partial x} \frac{dx}{dt} = \frac{\partial V_c}{\partial y} \frac{dy}{dt} = \frac{\partial V_c}{\partial z} \frac{dz}{dt} \rightarrow 0 \quad \begin{array}{l} \text{Spin is maximum, body explodes.} \\ \text{A Black Hole explodes in this contion.} \end{array}$$